

## *PALACE ON WHEELS*

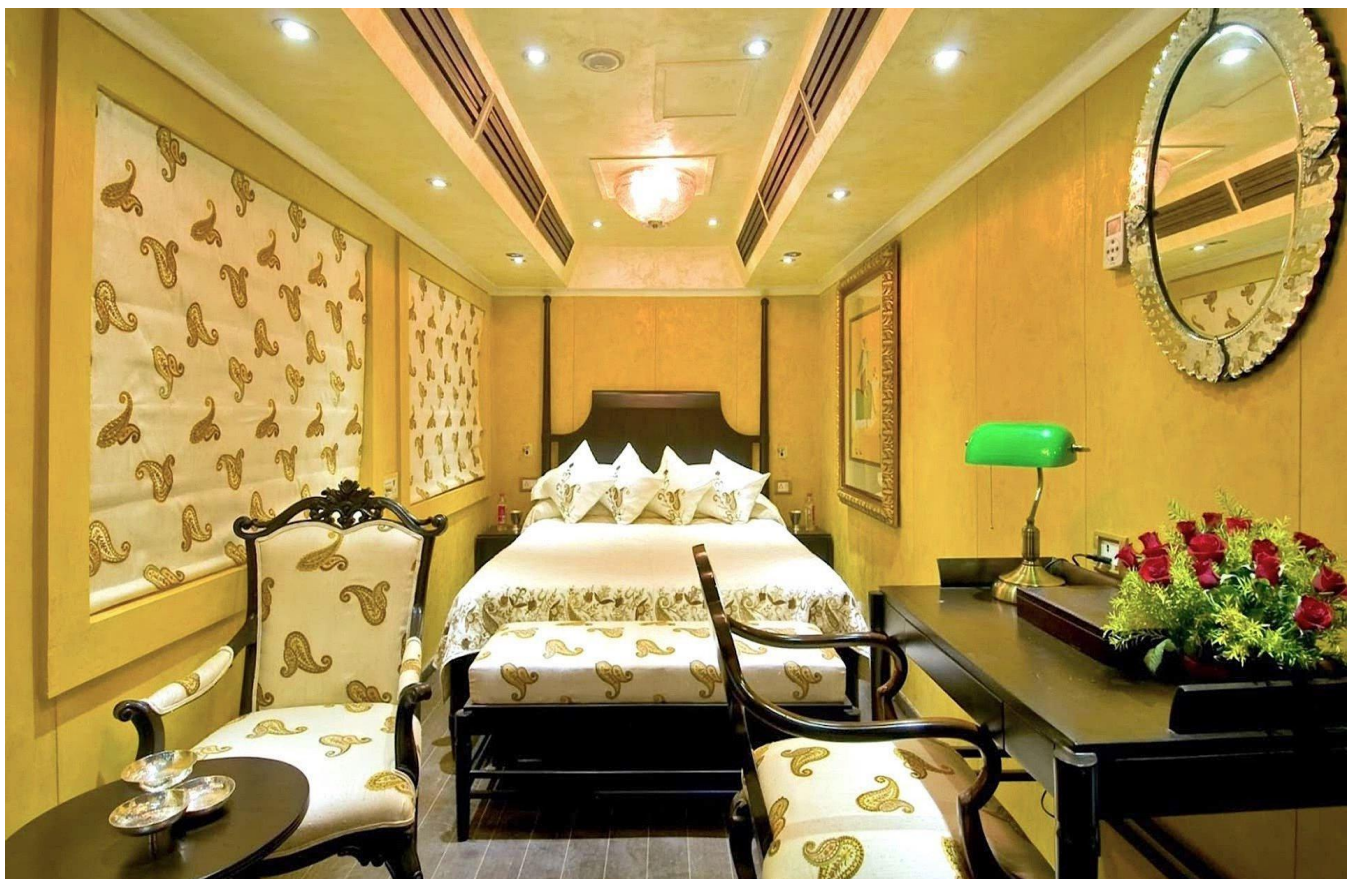


The first Palace on Wheels luxury train commenced run on 26 January 1982, one of the most luxury touristic train of India. It is famous for touring Rajasthan State ever since. The train comprises 14 air-conditioned coaches which are named after former Rajput states matching the aesthetics and interiors of the royal past of Rajputana culture. Each coach (we call it Saloon) equipped with four twin-bedded chambers with attached bathrooms have running hot and cold water and showers. Every coach also has a common seating area/lounge where tourists can get together to enjoy a cup of tea and watch cities as they pass. Also, each saloon has a mini pantry to ensure availability of hot and cold beverages, and refreshments.





The modern amenities have been thoughtfully designed, sofas, wonderfully appointed beds with comfortable furnishings, inbuilt wardrobes and huge glass windows to watch the landscape outside while journey.





This train has two restaurants namely "Maharaja" and "Maharani" with a Rajasthani ambience serving multi-cuisine such as Continental, Chinese, Indian and Rajasthani. You can enjoy well-stocked bar offering the choice of spirits/wine of Indian and International brands.

So, we at Hi-Five Travel Services welcomes you to board this luxury train and soak in the colours and experience the royal life of the Maharajas.

Special assistance, in the form of wheel chairs and an attendant are available for disabled travellers.



## *Tour Itinerary*

**Day 01: Tuesday: Arrive Delhi**

Arrive Delhi International airport by flight. After clearing immigration and custom formalities, you will be meet and greet by our company representative, traditional welcome garlanding.

Transfer to hotel by AC transport. Arrive and check in at hotel.

Overnight stay at hotel.

### **Day 02: Wednesday: New Delhi Depart**

Morning after breakfast, day at leisure.

Afternoon departure transfer to Safdarjung Railway station. Upon arrival traditional welcome by Garland and Aarti & check-in formalities. Later you have free time for photo-shoot with traditionally attired Palace on Wheels trains' staff. You will be escorted to your saloon cabins by personal attendant for briefing on cabin amenities. Now, you may proceed to Bar Lounge for complimentary welcome drink. Train Departs at 6:30PM & Dinner served onboard.

### **Day 03: Thursday: Jaipur -Pink City**

Breakfast onboard train. Upon arrival at Jaipur Railway Station royal welcome by Elephants & proceed to visit St. Albert Museum, City Palace & UNESCO World Heritage Site of Jantar Mantar (Sun Observatory), Photo stop at Hawa Mahal (Palace Of winds).

Afternoon visit to UNESCO World Heritage Site Amber Fort and enjoy ride up the steep ramparts of the fort on festively decorated Elephants. Enjoy lunch in 1135 AD Boutique Restaurant, located in Fort premises. Later discover the beauty of 16th century well preserved Fort Palace, with huge courtyard's and built in rare fusion of combined Rajput and Mughal architecture. Around 5'o clock free time for shopping.

Return to train by 6:00PM & depart for onward journey. Dinner will be served onboard.

### **Day 04: Friday: Ranthambore Tiger Reserve**

Around 06:30 AM proceed from Sawai Madhopur Railway Station for jungle safari by 15-Seater Canters to visit Ranthambore Tiger Reserve. The jungle is home to Tigers, Panthers, Sloth bears, Pythons, Marsh crocodiles & hundreds of deer & numerous birds. Return back to train by 09:30AM & depart.

Breakfast & lunch onboard.

Friday afternoon: CHITTORGARH- Hill Fort

At 04:00PM train reaches Chittorgarh Railway Station & proceed for excursion to UNESCO World Heritage Site of Hill Fort of Chittorgarh, spread over a huge plateau - with history dating back to 11<sup>th</sup> century. Chittorgarh Fort is considered to be the largest fort of India. Late evening, enjoy light and sound show in fort complex & later return to train for dinner.

Train departs post-midnight.

#### **Day 05: Saturday: Udaipur - City of Lakes**

Train arrives Udaipur by 08:00AM & onboard breakfast. Depart by AC transport to visit 17<sup>th</sup> Century built - City Palace complex with eleven constituent Mahal (Palaces), balconies, towers and cupolas. Also visit Crystal Gallery - housing personal collection of H.H. of Udaipur. Later enjoy boat ride around the world famous "Lake Palace Hotel" atop a small island in Lake Pichola. Proceed for lunch to Heritage (Palace) Hotel. Time free for shopping and visit the Royal Gardens at Saheliyon Ki Bari & return to train by 03:00 PM & depart.

Dinner onboard.

#### **Day 06: Sunday: Jaisalmer - Oasis in Desert**

Enjoy your breakfast onboard. Deboard train around 09:30 AM and drive to UNESCO World Heritage Site of Jaisalmer Fort. Straight out of an Arabian Nights fable. Enjoy a leisurely walk through the 15<sup>th</sup> century built living Fort complex, standing at a height of hundred meters over Jaisalmer town & glows golden in the afternoon sun. The fort is entered through a forbidding series of massive gates leading to a large courtyard.

Visit Patwonki Haveli, one of the largest and most elaborate mansion houses-which is five storeys high & extensively carved. Also visit a group of 15<sup>th</sup> century-built Jain Temples, which are stunningly engraved & have a library hosting some of the oldest manuscripts of India.

Proceed for lunch to 5-Star hotel & later return to train for brief rest.

At 04:30PM proceed for excursion to Sam sand Dunes in Thar Desert to enjoy Camel ride & sunset photo shoot.

Later enjoy cultural program & dinner at 5-Star Hotel. Return to train by 10:00PM & depart.

#### **Day 07: Monday: Jodhpur - Heart of Marwar**

Morning train arrives around 08:00AM. After breakfast board AC coach and proceed for sightseeing of 16<sup>th</sup> century built Mehrangarh Fort, atop a rocky hill which soars 125 Mts above Jodhpur town. The Palace complex is approached by a series of gateways set at an angle so that enemy armies could not charge, with any success. Once past the Fort gates, you have access to breath taking Palatial Apartments (Mahal), overlooking wide courtyards. Inside the fort complex is a museum having wide & impressive collection of Royal dresses & Medieval weapons.

Also visit Jaswant Thada, built late 19<sup>th</sup> century, a cluster of royal cenotaphs in white marble. Later visit museum at Umaid Bhawan Palace, displaying personal artifacts of H.H. Maharaja of Jodhpur.

Lunch at Restaurant.

Drop at railway station and board train & depart by 03:30PM.

#### **Day 08: Tuesday: Bharatpur: Keoladeo National Park**

At 06:30AM proceed to UNESCO world Heritage Site of Bharatpur Bird Sanctuary (Keoladeo National Park) & enjoy cycle rickshaw ride to view many of 375 species of both local & migratory birds (from places like Sri-Lanka, Europe, Siberia, China and Tibet).

Return to train for breakfast & depart by 08:45AM.

Tuesday Noon: AGRA - City of Taj Mahal

Train drops you at Railway station on outskirts of Agra at 10:30 AM & proceed first to visit UNESCO World Heritage Site of Agra Fort, seat of power of the mighty Mughal Empire. Lunch at 5-Star hotel. Later visit the Taj Mahal, one of seven wonders of modern world & a flawless architectural wonder built in white marble. Time free for shopping. Later return to train for onboard dinner & depart.

#### **Day 09: Wednesday: Return Delhi**

Train returns to Delhi Safdarjung Railway Station by 05:30AM. Enjoy your breakfast onboard train. Later check-out by 07:15AM and transfer to hotel/airport.

### **Palace on Wheels Schedule for the season 2021-22 & 2022-23**

Month	Year	
	2022	2023
January	05, 12, 19, 26	04, 11, 18, 25
February	02, 09, 16, 23	01, 08, 15, 22
March	02, 09, 16, 23, 30	01, 08, 15, 22, 29
April	06, 13, 20, 27	05, 12, 19, 26
May – August	No Service	No Service
September	07, 14, 21, 28	
October	05, 12, 19, 26	
November	02, 09, 16, 23, 30	
December	07, 14, 21*, 28*	